



SHALLOW LAKES & WETLANDS PROTECTION & RESTORATION PHASE X

Ducks Unlimited proposes to strategically acquire and restore 1,500 acres of prairie and wetlands for inclusion in Minnesota DNR state Wildlife Management Areas, including 300 acres of wetlands.

- **Phase 10 of Ducks Unlimited's ongoing programmatic land acquisition and restoration program**
- **Focus: Restorable prairie-wetland complexes on WMAs and on DNR-managed shallow lakes**

Primary goals:

- ◆ Strategically acquire and restore marginal agricultural lands with drained prairie wetlands adjacent to state WMAs
- ◆ Strategically restore and buffer prairie land around DNR-managed shallow lakes and wetlands
- ◆ Benefit breeding and migrating waterfowl, pheasants, non-game prairie birds and pollinators
- ◆ Help implement Minnesota's Prairie Conservation Plan by restoring prairie and wetlands in key landscapes

Secondary goals:

- ◆ Preserve remnant native prairie where possible on tracts for sale
- ◆ Provide public hunting and other outdoor opportunities on lands acquired for Minnesota DNR state WMAs

Location: Prairie Pothole Region in the southwest prairie portion of Minnesota

Habitat Outputs: 1,500 acres of protected prairie and wetland habitat for breeding ducks and other wildlife

Wildlife Outcomes: Based on DNR guidance and best available science, we estimate this habitat will support 122 pairs of mallards, 2 or more trumpeter swans, 706 pairs of bobolinks, 571 pairs of grasshopper sparrows, 400 harvested rooster pheasants and 3,600 – 9,600 monarch butterflies.

BUDGET: \$ 9,980,000 TOTAL REQUEST

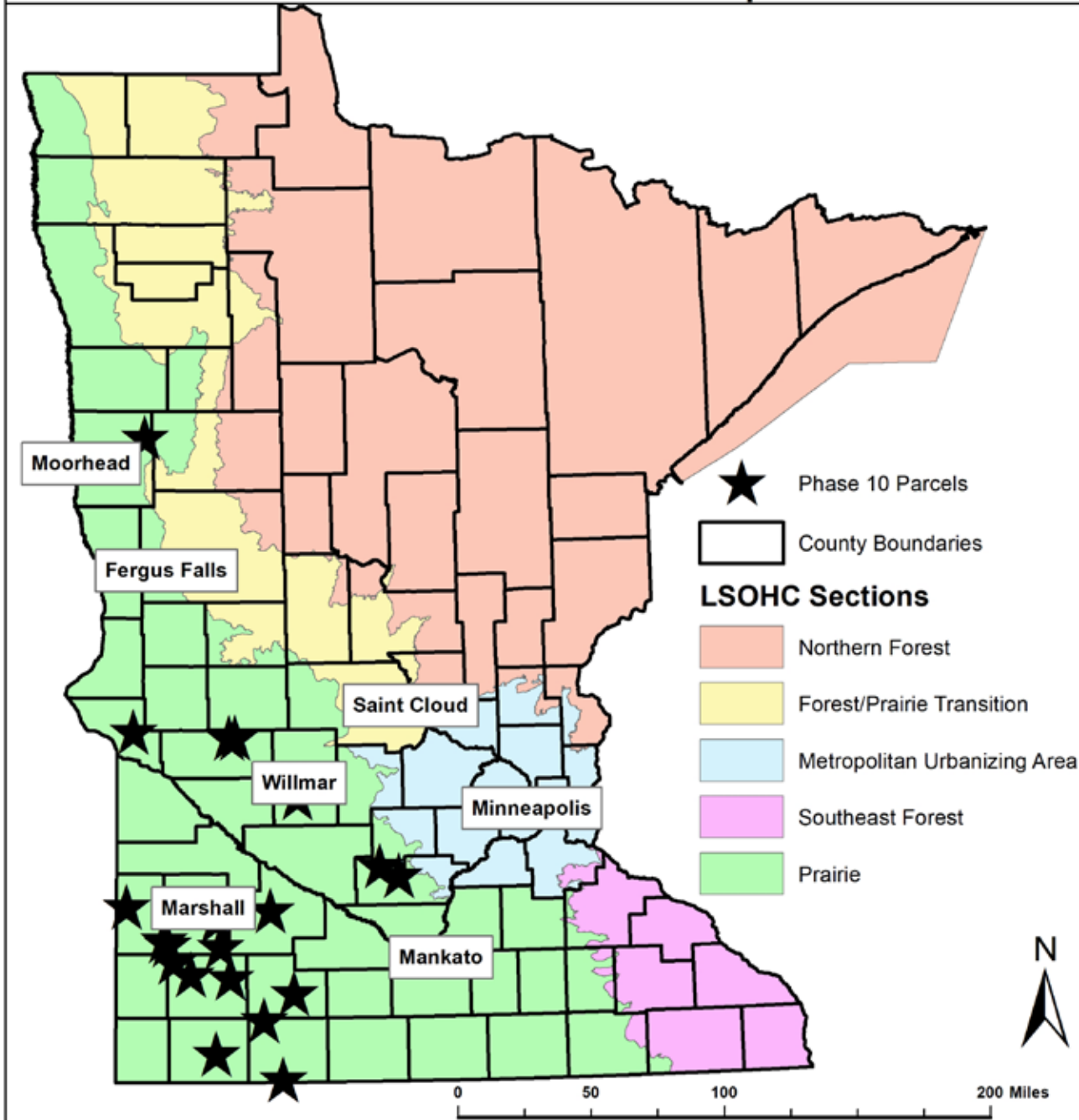
Land Acquisition:	\$6,690,000 to purchase 1,500 acres or more, depending on appraised value of land
Contracts:	\$1,600,000 for wetland and native prairie restoration contracts
Professional Services:	\$120,000 for land appraisals, title reviews, boundary surveys, closing costs, etc.
Personnel:	\$780,000 for DU biologists and engineers over five years to buy and restore land
In-state Travel:	\$90,000 for DU biologists and engineers over five years to buy and restore land
Supplies and Materials:	\$90,000 for native grass and forb seed materials and other supplies to restore land
Tools and Equipment:	\$30,000 for prairie seeding and wetland restoration equipment
Direct Support Services	\$80,000 for DU staff support costs, including legal, administrative, office, etc.
DNR Land Acquisition:	\$100,000 for DNR lands and minerals realty staff and AGO staff fees to transfer land
DNR IDP Costs:	\$400,000 for DNR wildlife to buy native seed and implement "Initial Development Plan"

PRIOR DU OHF ACQUISITION APPROPRIATION SPENDING AND ACCOMPLISHMENTS:

Appropriation Year:	Appropriation \$:	Funds Spent:	Remaining:	Acres Accomplished:
2009 (Phase I)	\$ 450,000	\$ 450,000 (100%)	\$ 0	2 tracts, 85 acres - <i>completed</i>
2010 (Phase II)	\$2,625,000	\$2,616,500 (100%)	\$ 0	3 tracts, 330 acres - <i>completed</i>
2013 (Phase III)	\$3,530,000	\$3,530,000 (100%)	\$ 0	11 tracts, 567 acres - <i>completed</i>
2015 (Phase IV)	\$9,040,000	\$8,921,400 (99%)	\$ 118,600	3 tracts, 995 acres - <i>restoration ongoing</i>
2016 (Phase V)	\$5,801,000	\$5,773,000 (99%)	\$ 28,000	8 tracts, 826 acres - <i>restoration ongoing</i>
2017 (Phase VI)	\$5,750,000	\$5,745,500 (99%)	\$ 4,600	8 tracts, 762 acres - <i>restoration ongoing</i>
2018 (Phase VII)	\$4,770,000	\$4,260,000 (89%)	\$ 510,000	4 tracts, 603 acres - <i>restoration ongoing</i>
2019 (Phase VIII)	\$6,150,000	\$3,757,700 (61%)	\$2,392,300	5 tracts, 542 acres - <i>restoration ongoing</i>
2020 (Phase IX)	\$4,608,000	\$1,260,400 (27%)	\$3,347,000	1 tract, 234 acres thus far

By 2022, DU will have spent most past OHF grant funds appropriated for fee-title land acquisition (only land restoration funding will remain)!

Ducks Unlimited Shallow Lake & Wetland Protection Program Phase X - WA 02 Parcel Map



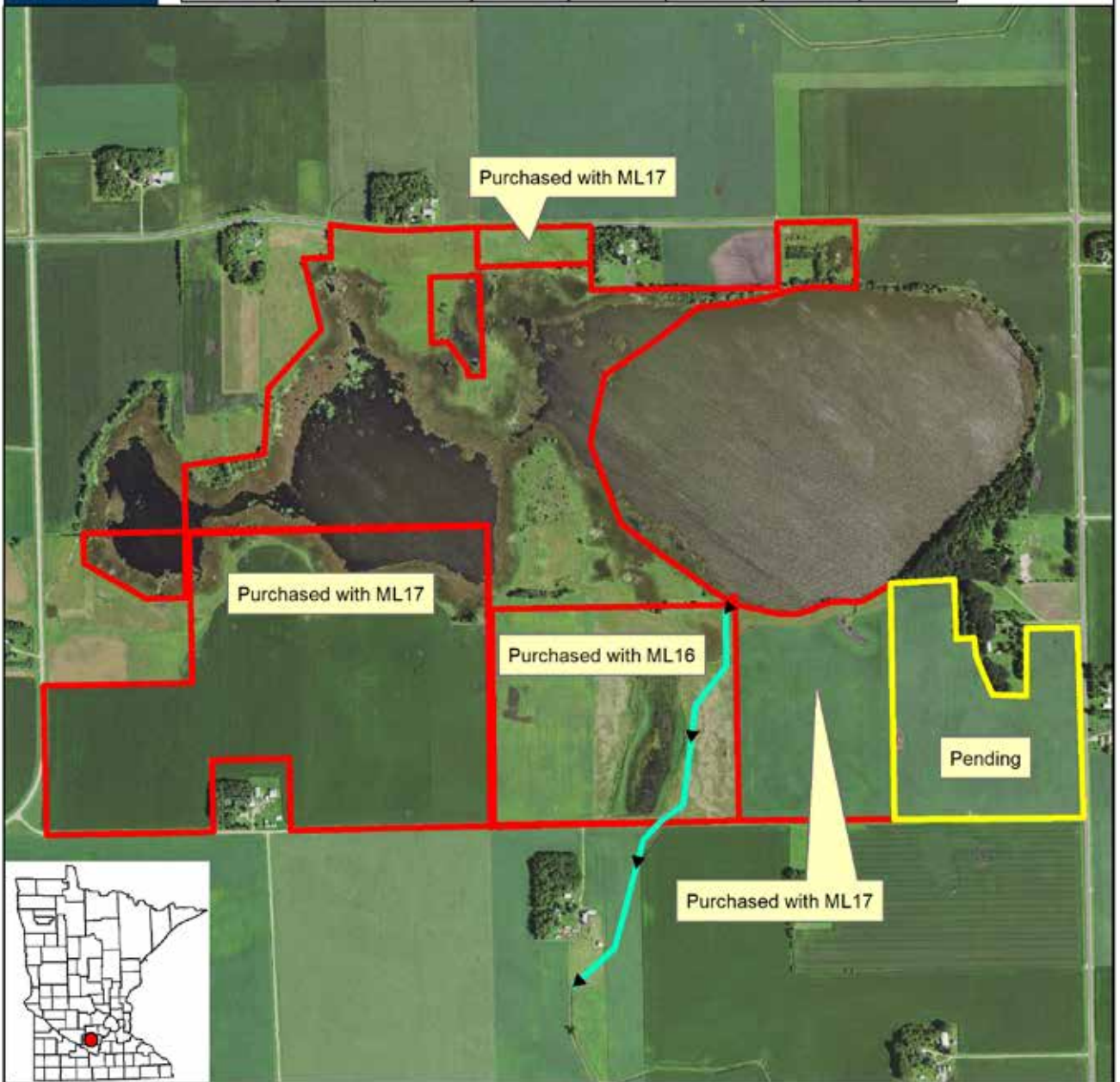


Indian Lake WMA - DU Acquisitions

Transit Township, Sibley County, MN






0 0.325 0.65 1.3 Miles



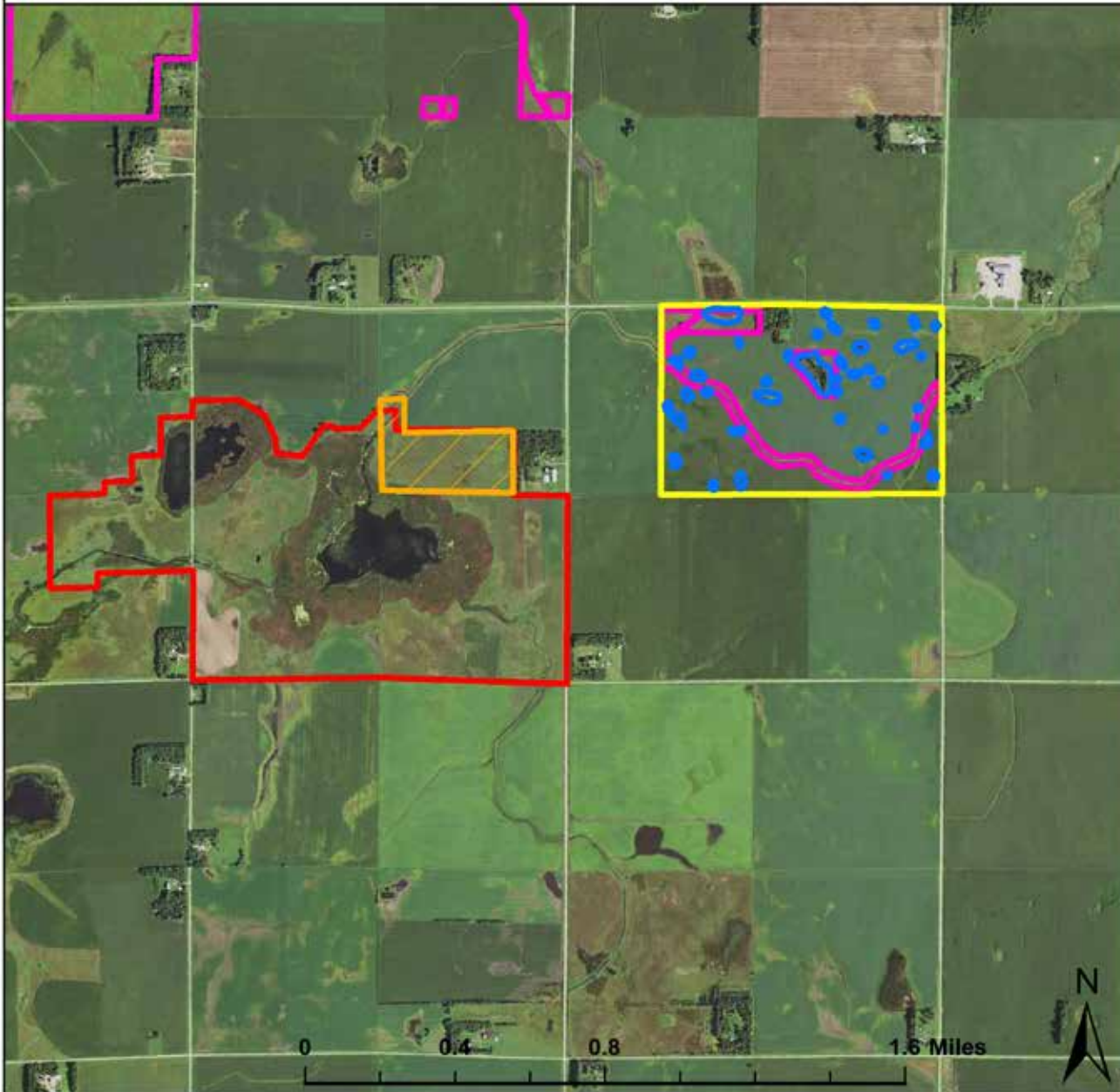
LIVING LAKES



-  Proposed Outlet
-  Peterson Tract
-  Indian Lake WMA

Shaokatan WMA - Mudder Tract

Lincoln County, MN
T111N, R46W, Section 3
Tract size: 239-acres



LIVING LAKES



-  Remerowski Tract
-  Mudder Wetlands
-  Mudder Tract
-  RIM Easements
-  WMA Boundaries



Shaokatan WMA - Mudder Tract

Lincoln County, MN
T111N, R46W, Section 3
Tract size: 239-acres



LIVING LAKES

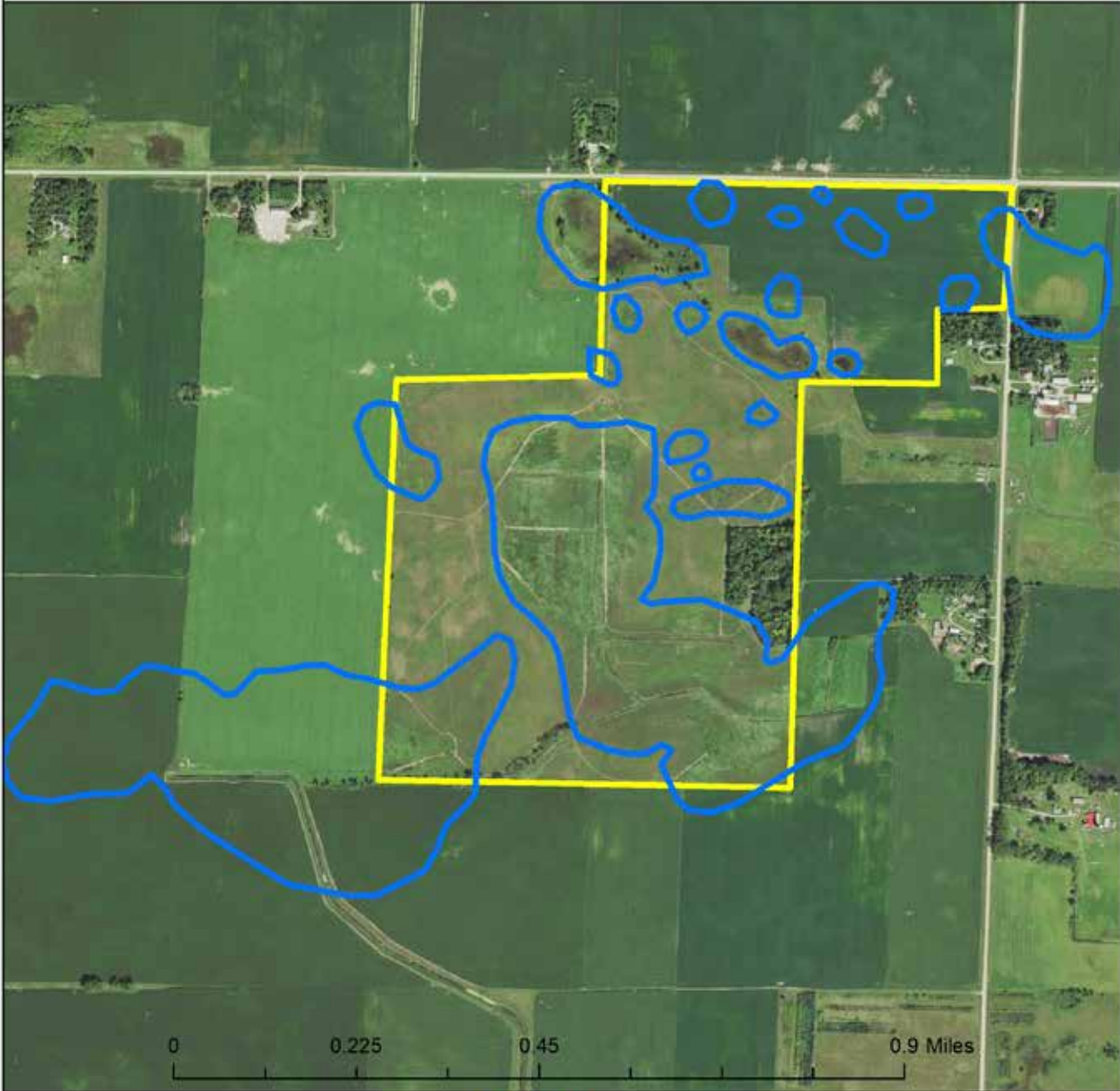


-  Mudder Wetlands
-  Mudder Tract
-  WMA Boundaries



Whitefield WMA - Tract 5

Kandiyohi County, MN
T118N-R35W Sections 9 & 10
Acq size: 236-acres



**LIVING
LAKES**



Whitefield 5 Wetlands

Whitefield 5



Henry X WMA - Lee Tract

Swift County, MN
T122N, R39W, Section 17
Tract size: 40 acres



LIVING LAKES



-  Lee Tract Wetlands
-  Lee Tract
-  WMA Boundaries
-  DU Purchased Hamilton Tract





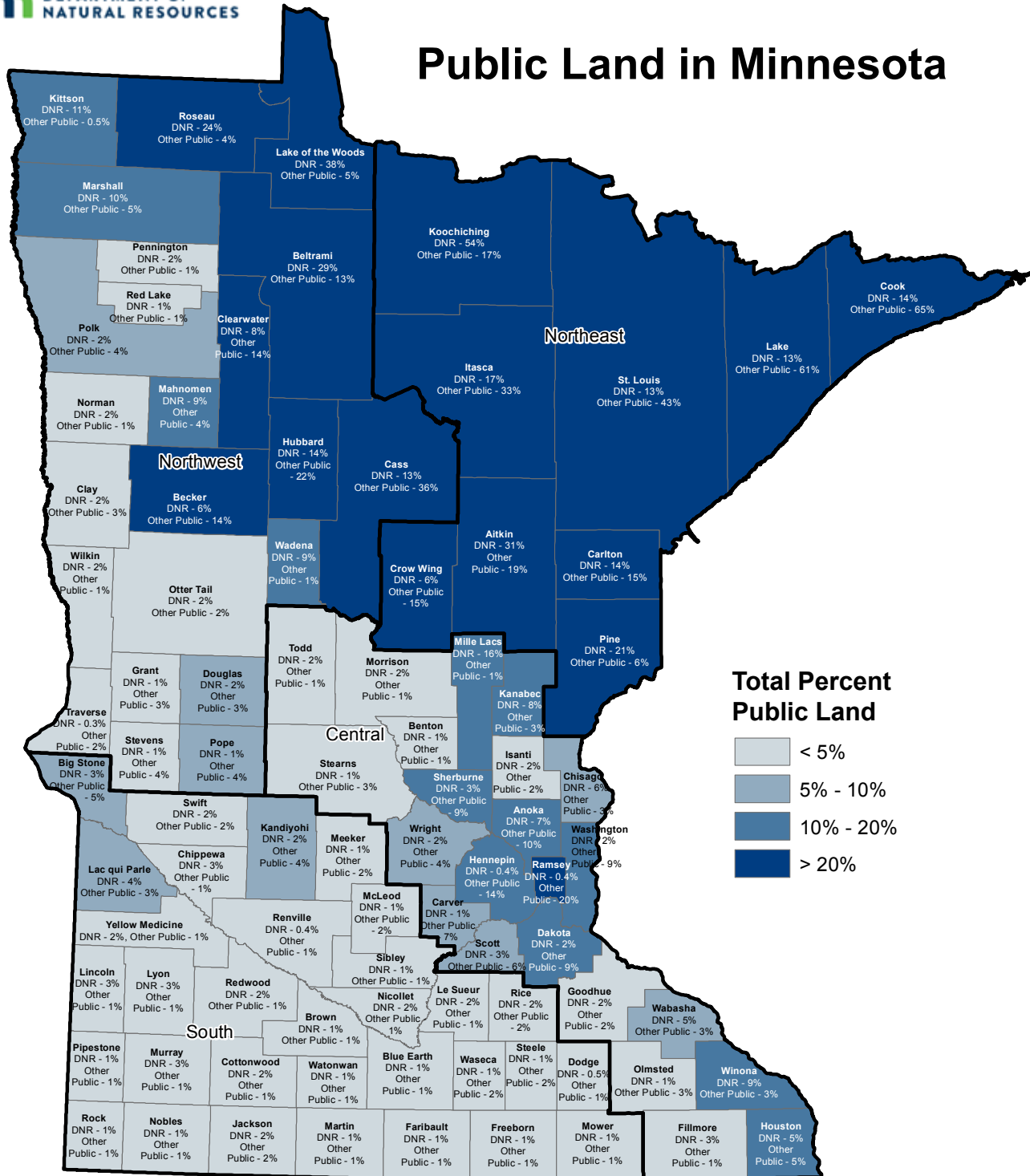
PUBLIC LAND ACQUISITIONS & RESTORATIONS VIA OHF GRANTS

Ducks Unlimited has actively supported public land acquisition and restoration in Minnesota since we began delivering conservation projects in the United States in 1984. In the first two decades after passage of the North American Waterfowl Management Plan in 1986, Ducks Unlimited provided cost-share to the Minnesota DNR as Critical RIM Match to help purchase land, in addition to engineering assistance and construction funding to both the Minnesota DNR and the U.S. Fish & Wildlife Service to restore public wetlands and enhance shallow lakes, such as Swan Lake. Following voter passage of the Clean Water, Land, and Legacy Amendment to Minnesota's Constitution in 2008, Ducks Unlimited now actively purchases public land to restore wetlands and prairie for our conservation agency partners and the public.

#	Acres	Tract Name	Public Land Mgt Unit	Public Agency Partner	County
1	40	Remerowski Tract	Shaokatan WMA	Minnesota DNR	Lincoln
2	45	Brackey Tract	State Line Lake WMA	Minnesota DNR	Freeborn
3	60	Montgomery Tract	Pelican Lake WPA	U.S. Fish & Wildlife Service	Wright
4	116	Rath Tract	Boon Lake WPA	U.S. Fish & Wildlife Service	Renville
5	96	Pfeifer Tract	Thoen/Harold Lake WMA	Minnesota DNR	Meeker
6	118	Miller Tract	Klinker WMA	Minnesota DNR	Murray
7	36	Hogan Tract	Diamond Lake WMA	Minnesota DNR	LeSueur
8	10	Knish Tract	Diamond Lake WMA	Minnesota DNR	LeSueur
9	28	Marlow Tract	Superior National Forest	USDA Forest Service	St. Louis
10	12	Borgimeier Tract	Gilfillin WMA	Minnesota DNR	Blue Earth
11	25	Perry Tract	Lac Qui Parle WMA	Minnesota DNR	Big Stone
12	59	Ochs Tract	Magaksica WMA	Minnesota DNR	Freeborn
13	60	Schram-Robinson Tract	Thoen/Harold Lake WMA	Minnesota DNR	Meeker
14	70	Zins Tract	Swan Lake WMA	Minnesota DNR	Nicollet
15	25	Netz Tract	Swan Lake WMA	Minnesota DNR	Nicollet
16	52	Kuester Tract	Swan Lake WMA	Minnesota DNR	Nicollet
17	28	King Tract	Perch Creek WMA	Minnesota DNR	Martin
18	87	Dietz I Tract	Sanborn Lake WMA	Minnesota DNR	Lesueur
19	126	Dietz II Tract	Sanborn Lake WMA	Minnesota DNR	LeSueur
20	23	Peterson Tract	Sanborn Lake WMA	Minnesota DNR	LeSueur
21	75	Gintner Tract	Sanborn Lake WMA	Minnesota DNR	LeSueur
22	285	Krahmer Tract	Rooney Run WMA	Minnesota DNR	Martin
23	644	Jones Tract	Swessinger WMA	Minnesota DNR	Nobles
24	95	Muchow Tract	Indian Lake WMA	Minnesota DNR	Sibley
25	59	Yonkey Tract	Stokman WMA	Minnesota DNR	Blue Earth
26	95	Bell Tract	Hurricane Lake WMA	Minnesota DNR	Cottonwood
27	155	Shoen Tract	Perch Creek WMA	Minnesota DNR	Martin
28	40	Peterson Tract	Altona WMA	Minnesota DNR	Lincoln
29	137	Christensen Tract	Badger Lakes WMA	Minnesota DNR	Murray
30	80	Richardson Tract	Shetek WMA	Minnesota DNR	Murray
31	150	Dahl Tract	Goose Prairie WMA	Minnesota DNR	Clay
32	160	Larson Tract	Sweetwater WMA	Minnesota DNR	Lac Qui Parle
33	141	L. Goehle Tract	Tyler & Discors WMAs	Minnesota DNR	Lincoln
34	12	H. Goehle Tract	Tyler WMA	Minnesota DNR	Lincoln
35	41	Skime Tract	Altona WMA	Minnesota DNR	Lincoln
36	62	Muchow II Tract	Indian Lake WMA	Minnesota DNR	Sibley
37	159	Kasper Tract	Westport WMA	Minnesota DNR	Pope
38	233	Steinke Tract	Lac Qui Parle WMA	Minnesota DNR	Big Stone
39	8	Peterson Tract	Indian Lake WMA	Minnesota DNR	Sibley
40	191	Woods Tract	Indian Lake WMA	Minnesota DNR	Sibley
41	64	Erickson Tract	Whitefield WMA	Minnesota DNR	Kandiyohi
42	147	Tenhassen Farm Tract	Seymour Lake WMA	Minnesota DNR	Martin
43	199	Peterson Tract	Great Oasis WMA	Minnesota DNR	Murray
44	136	Onken Tract	Lake Maria WMA	Minnesota DNR	Murray
45	159	Stoderl Tract	Stoderl Slough WMA	Minnesota DNR	Murray
46	15	Fosso Tract	Monson WMA	Minnesota DNR	Swift
47	72	Hamilton Tract	Henry X WMA	Minnesota DNR	Swift
48	120	Huso Tract	Monson WMA	Minnesota DNR	Cottonwood
49	234	Leason Tract	Whitefield WMA	Minnesota DNR	Kandiyohi

5,084 total acres acquired by DU via OHF to date (August 2020)

Public Land in Minnesota



DNR = DNR Administered Fee Surface ownership according to Land Records PLS 40 data as of October 2019. This data does not include leases, easements, or tax forfeit lands.

Other Public = All other public land was queried from Minnesota Geospatial statewide county parcel data as of October 2019. Public land includes federal, county, tax forfeit land, municipal, and other state agency ownership. Public land does not include tribal land. Errors may exist.

For the purposes of this analysis, percent of land is calculated using the acres of public land and the acreage of county political boundaries. County acreages may include large bodies of water.

The State of Minnesota, the Minnesota Department of Natural Resources, nor their employees, make any representations or warranties, express or implied, with respect to the use of or reliance on the data provided herewith, regardless of its format or means of transmission. There are no guarantees or representations to the user as to the accuracy, currency, completeness, suitability or reliability of this data for any purpose. THE USER ACCEPTS THE DATA "AS IS" AND ASSUMES ALL RISKS ASSOCIATED WITH ITS USE. The Minnesota Department of Natural Resources assumes no responsibility for actual, consequential, incidental, special or exemplary damages resulting from caused by or associated with, any user's reliance on or use of this data, even if appraised of the likelihood of such damages occurring. All maps and other material provided herein are protected by copyright.

December 23, 2019

